



Fishe®

CATALOG

20  
24



# Our Vision

The story of Fishe® begins with one woman's passion for fly fishing. After a lifetime of fishing in ill-fitting clothing, Linda founded Fishe® with the goal of creating functional fishing fashion for women. Fishe® empowers women to express their personalities and confidence in the outdoors and change women's outdoor wear forever.



functional fashionable fishable!

# INDEX

## Apparel

- 6 Signature Leggings
- 8 High-Waisted Leggings
- 8 Thermal Active Leggings
- 9 Capri Leggings
- 10 Pocket Leggings
- 12 River Shorts
- 13 Lifestyle Jogger
- 15 Skorts
- 16 1/4 Zip Sunshirt
- 19 Backcast Sunshirt
- 20 Stonefly Sunshirt
- 20 Signature Fishing Shirt
- 21 Tunic Fishing Shirt
- 21 Fleece Crew Neck
- 22 Brushed 1/4 Zip
- 22 Brushed Joggers
- 24 Full-Zip Midlayer Jacket
- 24 Retro Fleece Vest
- 25 Riffle Snap Fleece Jacket
- 25 Fleece Full-Zip Jacket
- 26 Sports Bras
- 28 Tubes
- 30 Trucker Hats
- 31 Five Panel Hats
- 32 Beanies & Headbands

## Bags

- 34 Backpack Dry Bags
- 36 Roll Top Dry Bags
- 37 Durable Stuff Sacks
- 38 Wedge Tote Dry Bag
- 39 Groovy Grayling Duffle
- 40 Canvas Tote Bags
- 41 Travel Packing Cubes
- 41 Fanny Packs
- 43 Mt. Cutty: The Adventure Series
- 44 Kaleido King Weekender
- 44 Kaleido King Crossbody



## Gear

- 45 Retractable Zinger
- 45 Reel Cases
- 46 Wading Belts
- 47 Forceps & Nippers
- 48 Poly Boxes
- 49 Microfiber Cleaning Cloth







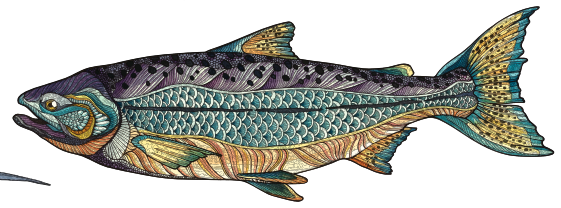
# Meet Our fish

Our fish patterns don't just come on apparel and gear, we also offer a range of collectable sticker decals for each fish.

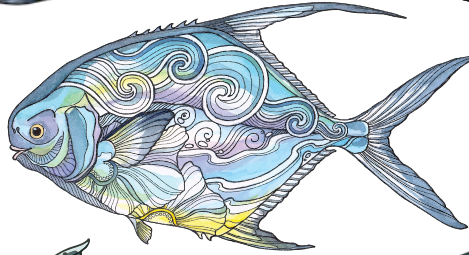
\* All products featuring the Boho Bass design will match this final version.



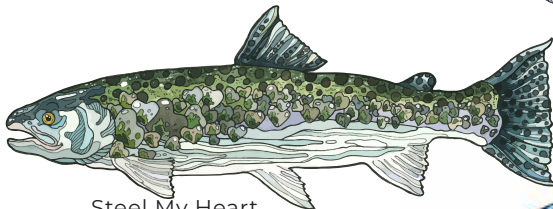
Rainbow Ridge



Kaleido King



Permit Paradise



Steel My Heart



Salty Striper



Boho Bass



HaliBorealis



REDtro Salmon



Tropical Tarpon



Unbound Brown



Mt. Cutty



Enchanted Grayling



Beauty and the Bonefish



Brookie



Weatherproof decal • Outdoor quality for durability • Small 6"x 2" • Large 8" x 2.75"



# SIGNATURE, Leggings

These leggings are perfect to wear while fishing, with or without waders. Excellent for wet wading as they are quick-drying. They double for everyday use as a handy pair of leggings for yoga, running, biking, hiking, lounging and even traveling!



Salty Striper



Tropical Tarpon



Enchanted Grayling



Kaleido King



Mt. Cutty



Brookie

Quick-Dry • Polyester/Spandex blend • UPF 50+ • Breathable • High Waisted





Steel My Heart



Unbound Brown



HaliBorealis



Permit Paradise



## HIGH-WAISTED

## Leggings

These High Waisted Leggings are the ultimate all-activity essential, seamlessly transitioning from serene yoga sessions to adventurous fishing escapades. The high waist band provides a flattering fit and support for every activity, ensuring comfortable and unrestricted fit.



Rainbow Ridge

Enchanted  
Grayling

Boho Bass



Brookie

Polyester Spandex Blend • High waistband with hidden pocket • Gusset at inseam

## THERMAL ACTIVE

## Leggings

Designed to keep you warm and cozy during chilly workouts or outdoor activities, these leggings are crafted with advanced insulation technology and a comfortable fit, ensuring maximum heat retention while allowing unrestricted movement, so you can stay active even in the coldest of conditions.

- Brushed back Polyester Spandex blend
- High waist legging with hidden pocket
- Gusset at inseam
- Shaped leg panels with solid and print.

Steel My Heart  
/ BlackHaliBorealis  
/ Vintage Indigo



# CAPRI Leggings

Experience the perfect balance of comfort and style with our capri leggings. These versatile bottoms provide a flattering fit and a breathable design, making them ideal for both intense workouts and casual everyday wear.



Brookie / Black



Enchanted Grayling  
/ Aleutian Blue

Available in 2 designs



Brookie / Black



Enchanted Grayling  
/ Aleutian Blue

- Material: 76% Polyester, 24% Spandex
- Style Specifics: High waist, hidden pocket on the back waistband, printed side panels with pockets.
- Fit Inseam Range: 19"- 20 1/2"
- Color: WaterCamo / Teal Blue



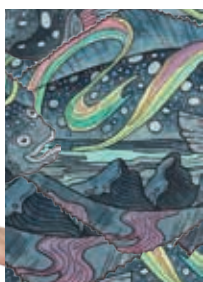
# POCKET Leggings

Perfect for a day on the water and for après fishing at the lodge. Used enthusiastically by fishing ladies everywhere, yoga enthusiasts, hikers, bikers, travelers, skiers and more. Leggings can take you from outdoor activities to day-to-day life without pause.



- Material: 76% Polyester, 24% Spandex
- Style Specifics: High waist, hidden pocket on the back waistband, printed side panels with pockets.
- Fit Inseam Range: 26"-28"

Available in 5 designs



HaliBorealis  
/ Storm Blue



Green Fish Camo  
/ Black



Boho Bass  
/ Orange Sunset



Tropical Tarpon  
/ Denali Grey



Rainbow Ridge  
/ Chestnut Brown







# RIVER Shorts

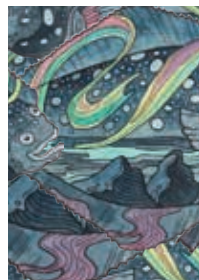
Introducing our stylish and functional river shorts - perfect for any outdoor enthusiast! Made from high-quality, lightweight fabric, our relaxed fit shorts provide ample room for movement. Plus quick-drying, water-resistant material to keep you comfortable while enjoying water activities!

NEW



- Relaxed fit
- Side seam pockets and secure zipper pocket.
- Pockets are mesh for quick dry comfort.
- Drawcord at waist
- Back patch pocket
- Quickdry, soft mid-weight fabric with stretch
- 100% polyester

Available in 2 designs



HaliBorealis



Boho Bass



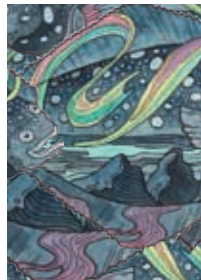
# LIFESTYLE Jogger

This jogger is as versatile and adaptable as you are. Casual comfort can be dressed up or dressed down, you'll never want to take these off. Prints pop out from the pockets. Your go-to pant for travel, fishing, or hanging out with friends!

- Polyester/Spandex blend
- UPF 50+
- Quick-Dry
- Breathable



Available in 2 designs



HaliBorealis  
/ Navy



Boho Bass  
/ Sitka Green



NEW

Pants









# Skorts

Hit the water in our newly designed Stonefly Skort! This skort features 4-way stretch material and easy-access pockets, giving you plenty of room to adventure, wade, and secure that catch. Perfect for fishing, hiking, running, lounging, and so much more.

Skorts



HaliBorealis



REDtro Salmon



NEW



Boho Bass

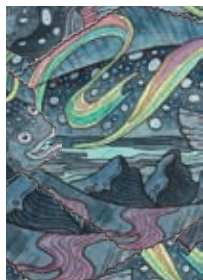


FEATURES FORCEP LOOP

Permit Paradise



FEATURES A ZIPPER-SECURED GEAR POCKET



HaliBorealis



REDtro Salmon



Permit Paradise



Boho Bass

- Hidden Forcep Pocket
- Easy-access slip pocket on waistband
- Anti-microbial shorts and waistband
- Zinger Loop above forcep pocket
- Outer Skirt: 94% Polyester, 6% Spandex
- Waistband and Inner Skort: 84% Recycled Polyester, 16% Spandex

Available in 4 designs



# shirts

## 1/4 ZIP SUNSHIRT

Made with high-quality, lightweight fabric, this sunshirt is designed to keep you cool and comfortable on hot and sunny days. With excellent moisture-wicking properties and a breathable material, you can stay dry and comfortable no matter how intense your fishing trip gets.

- UPF 50+ Sun Protection
- 1/4- zip closure with stand collar.
- Soft cool-touch fabric.
- Zipper chin guard
- 87.5% Polyester, 12.5% Spandex



Boho Bass



Enchanted Grayling



REDtro Salmon



Brookie











## BACKCAST SUNSHIRT

The Backcast Sunshirt is the lightest, most comfortable fishing shirt for women. Designed for ultimate protection and comfort, this UPF 50+ sun protection shirt has built-in thumbholes to help keep hands cool and prevent slips while casting, an ergonomic fit that keeps you cool in the heat, and lightweight fabric that dries super fast so you can wet a line with ease.



Enchanted Grayling / Violet Ombre



Steel My Heart / Wavelight Green



Aqua



Storm Blue

- UPF 50+
- Full coverage sun protection
- Thumb holes in sleeves
- Quick Dry function



## STONEFLY SUNSHIRT

Our popular Fishe® Stonefly Sunshirt is here! This shirt is designed with your favorite features, such as a quick-dry bamboo rayon fabric, hood for sun protection, and convenient side gear pocket. Simply pair with your favorite Fishe® leggings for a comfortable and FUNCTIONal day!

- UPF 50
- Zipper-secured Gear Pocket on side body.
- Comfortable hood for sun protection
- Antimicrobial QuickDry Material: 95% Rayon from Bamboo, 5% Spandex

BEST  
SELLER!



Plum Joy



Aqua



Sunshower Yellow



**ZIPPER-SECURED GEAR  
POCKET ON SIDE BODY**



## FLEECE CREW NECK

Made with soft and insulating fleece fabric, this crewneck keeps you warm and cozy during chilly fishing trips. With its durable construction and functional design, it's built to withstand rugged adventures while showcasing your love for the great outdoors.



Unbound Brown



Chummy

## SIGNATURE FISHING SHIRT

# shirts

From its quick-dry and UPF 50+ sun protection material to the convenient sunglass loop and microfibre cleaning cloth, this shirt is designed to keep you comfortable and prepared. With patch pockets featuring button closure and a mesh vented back panel, it offers both functionality and breathability for long days out on the water.

- Material: 92% Polyester, 8% Spandex
- Style Specifics: Quick-dry and UPF 50+ Sun protection, Sunglass loop and microfibre cleaning cloth, patch pockets with button closure, mesh vented back panel, printed details on inside collar, cuffs and inside button placket.
- Fit : Body Length Range 26 1/2 - 20 1/2



So Fly



Enchanted  
Grayling



## TUNIC FISHING

## shirts

The Tunic Fishing Shirt is a versatile top that can be worn fishing or included in your everyday wear with its classic style. The tunic style shirt is quick-dry and UPF 50+ for sun protection. In addition, there is a sunglass loop and microfiber cleaning cloth, mesh vented back panel, and patch pockets with button closure.

- Material: 92% Polyester, 8% Spandex
- Style Specifics: Quick-dry and UPF 50+ Sun protection, Sunglass loop and microfibre sunglass cleaning cloth hidden inside the hem, secure zippered pockets with quick-drain holes, mesh vented back panel, printed details on inside collar, cuffs and inside button placket.
- Fit : Front Body Length Range 26 1/2 - 29 1/2  
(Back body length is 2" longer than the front)



Unbound Brown

HaliBorealis

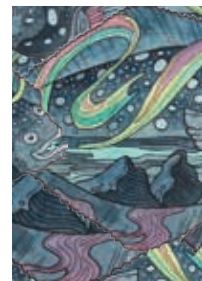
Boho Bass



Available in 3 designs



Boho Bass



HaliBorealis



Unbound Brown



## BRUSHED 1/4 ZIP

Crafted with a luxuriously soft and warm brushed fabric, this top offers exceptional comfort and style. The quarter zip design allows for easy temperature regulation, while the flattering fit and versatile look make it suitable for both casual outings and active adventures.

Steel My Heart



- Brushed back Polyester Spandex blend
- Shaped side seam panels
- 1/4 Zip front
- Stand collar
- All over print



Rainbow Ridge



HaliBorealis

## BRUSHED JOGGERS

These joggers are the ultimate cozy companion for your everyday adventures. Made with a plush and velvety brushed fabric, these joggers offer unmatched comfort and a laid-back vibe. With their relaxed fit and stretchy waistband, they are perfect for lounging around, running errands, or simply embracing your inner chill.

- Brushed back Polyester Spandex blend
- Slant pockets
- Back body yoke
- High waistband
- Relaxed leg finished into cuff
- Print details on pocket bag panel



HaliBorealis  
/ Vintage Indigo



Steel My Heart  
/ Black



## FULL-ZIP MIDLAYER JACKET

Our Midlayer Jacket is perfect for any outdoor adventure. The mid-layer insulation provides warmth and comfort on those cooler days. Easily layer up or down, depending on the temperature and weather so you can adapt to any conditions and stay comfortable throughout your entire fishing trip.

- Secured side seam pockets with zipper closure.
- Easy access chest pocket with zipper closure.
- Stand collar
- Full zip mid-weight jacket



Boho Bass / Sitka Green



HaliBorealis / Vintage Indigo

## RETRO FLEECE VEST

Crafted with a nostalgic touch, this vest features a soft and warm fleece fabric that keeps you cozy and stylish in cooler weather. With its timeless design, versatile zip-up front, and convenient pockets, it's the perfect layering piece to add a touch of retro charm to any outfit.

- Full Zip Vest
- Woven patch pocket with secure zipper
- Fleece lined stand collar



Unbound Brown / Black



HaliBorealis / Navy



## RIFFLE SNAP FLEECE

## Jackets

A classic and cozy fleece pullover, this layer is wonderfully versatile for all the adventures to come! The Riffle Snap Fleece Pullover is constructed from breathable, midweight polyester double-sided fleece.



Steel My Heart



Unbound Brown



HaliBorealis

- Material: 100% Polyester
- Secondary Material: 92% Polyester, 8% Spandex
- Each Riffle Snap Fleece pattern is uniquely printed and may not look exactly as the photos here. The placement of the print may vary, but the FUNCTIONality will always be truly Fishe!

## FLEECE FULL-ZIP

## Jackets

Introducing our new fleece jacket, the ultimate cold-weather essential that combines warmth, comfort, and style. Made from high-quality fleece fabric, this jacket provides excellent insulation while remaining lightweight and breathable.

- Full Zip Jacket
- Length fits at hip.
- Side panels and shaped yoke



Unbound Brown



Chummy



## SPORTS

## BRAS

Designed with both support and style in mind, this sports bra provides the perfect balance of comfort and performance.

- UPF 40
- Removable Padding
- Comfortable and supportive construction
- Tight fit for a body-hugging feel



Enchanted Grayling



Boho Bass



Permit Paradise



HaliBorealis



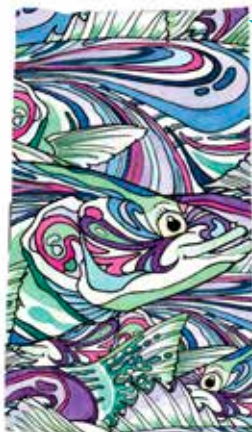






# Tubes

Stay warm and stylish with our reversible fleece neck warmer. Made from cozy fleece fabric, this accessory offers both comfort and versatility, keeping you protected from the cold while adding a touch of flair to your winter outfits.



Salty Striper



Enchanted Grayling



Rainbow Ridge\*



Unbound Brown



Tropical Tarpon



Beauty and the Bonefish



Steel My Heart



Mt. Cutty



Boho Bass\*



Kaleido King



REDtro Salmon



HaliBorealis



Permit Paradise

- Highly breathable
- Moisture wicking for maximum comfort
- Antimicrobial odor control

- Quick-drying
- UPF 50+ rated, blocking 97.5% of harmful UV rays
- Proudly made in the USA





## REVERSIBLE FLEECE

# Neck Tubes

Tubes

Stay warm and stylish with our reversible fleece neck warmer. Made from cozy fleece fabric, this accessory offers both comfort and versatility, keeping you protected from the cold while adding a touch of flair to your winter outfits.

- Reversible, solid color on Side A, All over print on Side B.
- Shaped hem to fit comfortably over shoulders.



Navy  
Reversible

Chummy



Black  
Reversible

Unbound Brown





# TRUCKER Hats

High-quality hats with original Fishe® art! Perfect for days spent on the river casting for your favorite fish - or for daydreaming about fishing.



Inside View



Enchanted Grayling



Boho Bass



Salty Striper



Tropical Tarpon



Unbound Brown



Kaleido King



Beauty and The Bonefish



Permit Paradise



HaliBorealis



Mt. Cutty



Tropical Tarpon Abstract



Boho Bass Abstract



Rainbow Ridge Abstract



Salty Striper Abstract



Enchanted Grayling Abstract



Mt. Cutty Abstract



Haliborealis Abstract



Unbound Brown Abstract

Wicking polyester sweatband • Plastic Snap Closure • Curved Bill  
Front material is woven Polyester • Back material is plastic mesh





## FIVE PANEL Hats



REDtro Salmon



Steel My Heart

- Patch on front
- Contrast color front cap
- Cotton Twill
- 5 panel hat
- Snap back



Rainbow Ridge



Brookie Fleece



HaliBorealis Fleece

- All over print
- Fleece cap with cotton twill visor
- Snap back



# Beanies

Whether you're casting a line or enjoying a brisk day by the water, our unique beanie keeps you comfortable while letting you proudly display your passion for fishing.



Unbound Brown Patch



Trout Jacquard

- 100% Acrylic
- Woven fold over label
- Patch Unbound Brown Trout
- 100% Acrylic

- 100% Acrylic
- Woven fold over label
- Multi color pom pom
- Jacquard beanie
- Ribbed Fold-over cuff

# Headbands

Adventure has no limits, especially when it comes to your headband. The lightweight material stays cool and dry even in intense heat, and the UPF 50+ rating protects your skin from harmful UV rays!



Tropical Tarpon



Unbound Brown



Haliborealis



Dolly Vee



Beauty and the Bonefish



Kaleido King



REDtro Salmon



Salty Striper



Brookie



Steel My Heart



Mt Cutty







NEW!

# Duffle

The Duffel Dry Bag is the latest and greatest addition to Fishe Wear's waterproof bag lineup. With 66 Liters of carrying capacity, roll-top and quick-release buckle closure, and splash proof exterior pocket, this duffel is a must have for all travelers. Not to mention, our unique and vibrant Groovy Grayling print will certainly stand out from the sea of black luggage at the airport...

- Capacity: 66 Liters
- Dimensions: 22 x 14.25 x 13"
- Material: Tarpaulin
- Quick-Release Buckles and Roll-top
- Splashproof exterior pocket with for quick-access to smaller items
- Adjustable, padded straps that can be secured together to be used over the shoulder or as a crossbody strap
- Welded seams



Steel My Heart

Groovy Grayling



# Wedge Tote

Work or travel, this bag is the perfect go-bag to take with you on any outdoor adventure! Room for your favorite pair of waders, boots, belt and jacket! It has a nice zippered top and long shoulder straps to make for easy use.

Bags

Unbound Brown



Tropical Tarpon



Daisy chain lash points • Heavy-Duty welded vinyl • White interior  
Proudly made in the USA  
25L • 6.5"H x 17" W x 6" Deep

HaliBorealis





# BACKPACK Dry Bags

Perfect for hiking and wading to your secret fishing spot off the beaten path. This bag will protect your extra layers, fly box and lunch from all the elements you encounter on your next outdoor adventure.

- Quick-release buckles and roll-top
- Padded shoulder straps and back panel
- Adjustable sternum strap
- Rugged material and waterproof welded seams
- White interior
- Splash proof exterior pocket for quick access to smaller items
- 28L • 21.5"H x 13" W x 7" Deep



Brookie



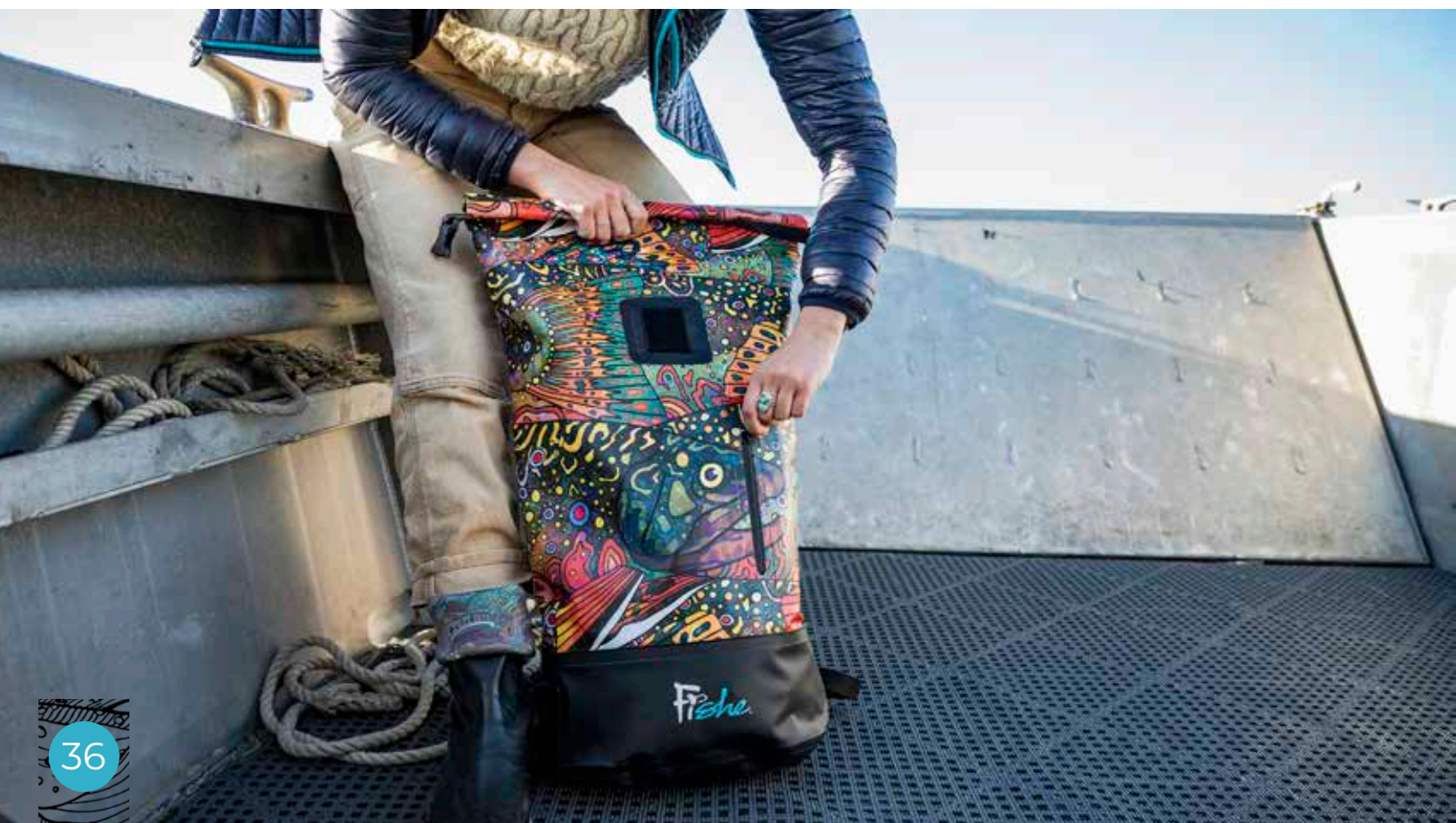
Kaleido King



Boho Bass



Haliborealis









## ROLL TOP

# Dry Bags

The perfect dry bag for out on the water! Great for keeping your gear dry. Fits small personal items needed for a day outside, such as another layer of clothing, hats, towels, and snacks. Alternatively in hot weather, bring along as a bag to keep your layers dry as you warm up!



Boho Bass\*



Salty Striper



Enchanted Grayling



Tropical Tarpon



HaliBorealis



Beauty and the Bonefish



Unbound Brown



Steel My Heart

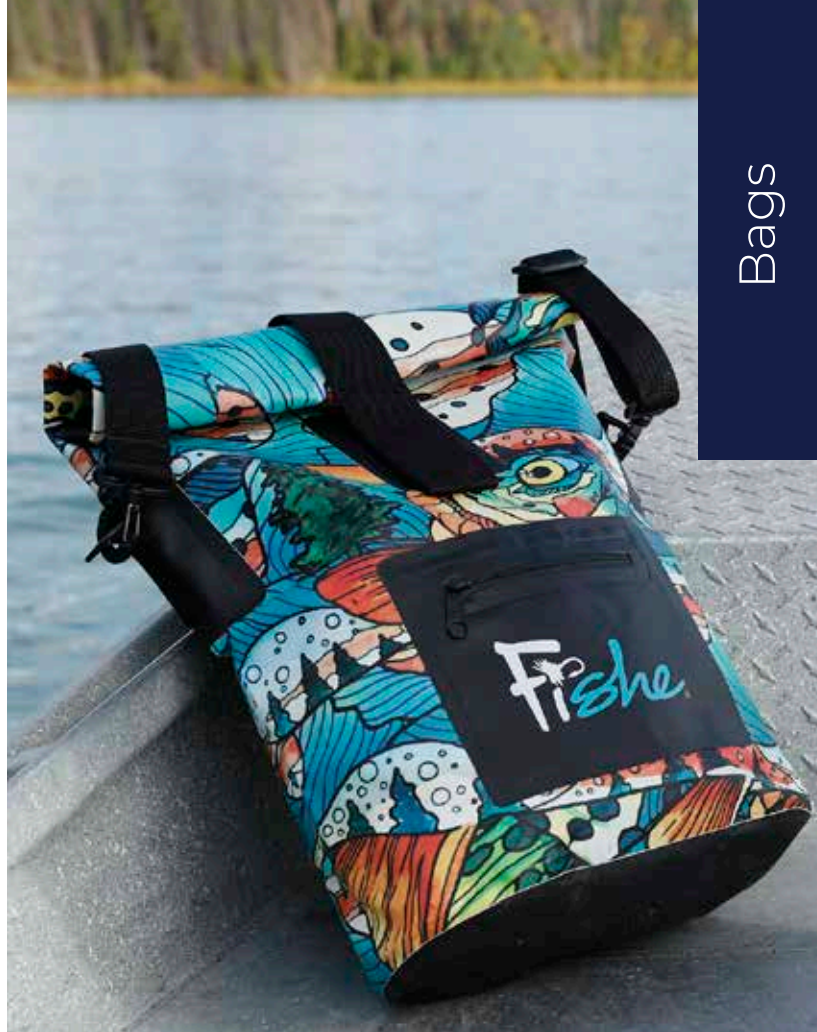


Mt. Cutty

*\*Boho Bass and Enchanted Grayling roll top image is for illustrative purposes only. Actual pattern placement will be slightly different.*

- Rugged material and waterproof welded seams
- Easy roll-top closure with top strap for quick access to contents
- Includes adjustable/removable shoulder strap
- Zippered front pocket with Splashproof zipper
- 22L · 18"H after a standard 3"-roll x 13" W x 7" Deep





# DURABLE Stuff Sacks

## Unbound Brown Stuff Sack

This 10L Stuff Sack featuring the Unbound Brown design, is made to keep your dry items dry! Carry your phone, wallet, light jacket, and other accessories without worry of water.

- Neoprene-like material, polyester-lycra blend
- Highly-durable, waterproof storage
- Welded seams
- 3-roll closure
- Lightweight and packable
- Built-in clear window for quick visual inventory
- Single D-Ring for securing to bags or boats
- 19"H x 11.75" W, Weight 4.2 oz, 10L capacity





# CANVAS Tote Bags

Fishing trips require packing a lot of little (and big) things to make your trip complete. From hats and sunglasses to fishing licenses and a change of shoes. Our multi-use tote can be the catchall bag for last-minute fishing trip items or the bag you use for school, groceries and ladies fly tying night.



Enchanted Grayling



Boho Bass



Tropical Tarpon



Kaleido King



Brookie



Salty Striper



Unbound Brown



Mt. Cutty



HaliBorealis



REDtro Salmon



Beauty and the Bonefish



Steel My Heart

Polyester Poplin Material • Shoulder strap: 1" W x 14"L • Bag size: 16" x 16"

*\*Redfish and Rainbow Ridge tote image is for illustrative purposes only. Actual pattern placement will be slightly different.*



# TRAVEL Packing Cubes



Travel cubes, set of 3 in our Brookie pattern\*. Arrive organized with this light weight and durable packing set. Keeps items secure without adding weight to your luggage. No more hectic searching for misplaced items, these packs feature a 2 way easy-pull zipper to provide fast opening and closing and breathable mesh to more easily locate items in your luggage.

\*Clothing not included

- Fabric: 210D Poly (not water resistant)
- Dual zippered opening
- Includes three packing cubes, each a different size, fit seamlessly in your checked suitcases
- Can be stored flat when not in use
- Breathable mesh top panel lets you easily see what's inside

## Dimensions:

- Small - 10 X 4 X 4
- Medium - 10 X 8 X 4
- Large - 13 X 10 X 4



# fanny packs



HaliBorealis

- Three pocket organization
- Interior pockets to keep things organized
- Three zipper closures
- Interior clip for keys
- Soft adjustable belt for comfort
- Exterior loops for easy attachment

Go hands Free with this FUNctional, fanny pack bag for all of your 'weekend' adventures in mind! Our bags come with adjustable straps and lots of pockets.



REDtro Salmon







MT. CUTTY

# the Adventure Series

## DAILY TOTE

Stay stylish and organized while you make your way to your next big adventure! Our new Tote Bag features a padded laptop pocket for electronics and an interior daisy chain system to organize cords and tools. With 20 Liters of space, this tote is sure to be your next go-to bag!

- Use with glasses, lenses, monitors, smartphones, tablets and more
- Secure zippered opening
- Daisy straps for quick-access tools Exterior pocket for smaller items
- Padded Laptop pocket
- Interior key fob pocket
- Interior Daisy chain system to organize cords, tools
- Teal interior
- Material: Polyester
- Dimensions: 20 L • 14.12" W x 13.7" H x 7.7" Deep



## DUAL DOPP KIT

We are all about making every piece of gear FUNctional here at Fishe®. Not only can this Dopp Kit carry all of your go-to travel essentials, but this can also function as a carrying unit for reels and fishing gear! With 4.5 Liters of space, this kit can hold up to 4 reels comfortably.

- Dual Travel bag and Fishing bag
- Fits reels and accessories
- Daisy straps for quick-access tools
- Rugged material and splash proof
- Teal interior
- Material: Polyester
- Dimensions: 4.5 L - 11" W x 5"H x 4" Deep



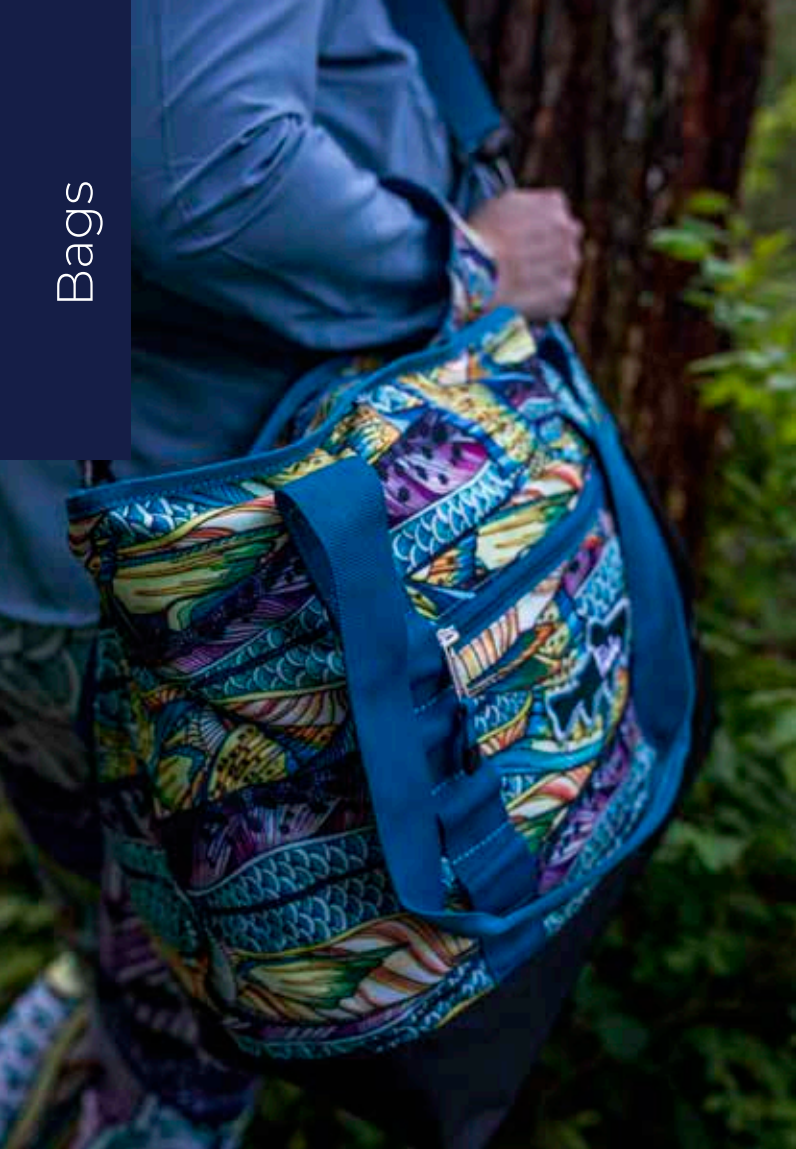
## TRAVEL TRIO PACK

You asked, we provided! These clear zip pouches are available in 3 different sizes and feature a water resistant, easy to clean design. Adding a pack of these Travel Trio Pack to your fishing pack will provide an added layer of protection for the important items that need it!

- Small Pouch: 8.2" x 6"
- Medium Pouch: 8.8" x 6.75"
- Large Pouch: 9.75" x 7.5"
- Dual Travel bag and Fishing bags Water resistant
- Welded zipper opening with Fishe® Artwork
- Fishe® Caribeenr Clear durable fabric easy to wipe clean
- Material: Clear Peva Coated Mesh







KALEIDO KING

# Weekender



As fun as it is FUNctional, we designed this bag with all of your 'weekend' adventures in mind! Carry it by the handles or attach the straps to wear the bag over your shoulder and go hands-free!

- Secure zipper closure
- Transforms from shoulder bag to crossbody
- Daisy chain for easy rod and accessory attachment
- Key fob snaphook
- Material: 100% Polyester

KALEIDO KING

# Crossbody



Let's go girl! Our crossbody bag is perfect for any occasion -whether you are heading to work, on a weekend fishing getaway, going to a party, or traveling, they are your perfect daily companion to wear over your shoulder or on your waders. Simply remove the shoulder strap and feed your Fishe® Wading Belt through the exterior loops to wear comfortably on the river!

- Attaches to wader belt for easy fishing access
- Removable shoulder strap
- Zipper pocket fits your wallet, phone or fly box
- Secure internal zippered pocket
- Material: 100% Polyester





# Reel Cases

Protecting your fly reel is important, but protecting it in style is even more important! These durable, high quality neoprene reel cases feature an extra large over-rod flap, water vents, thick neoprene, and durable velcro to keep your reels protected on and off the water.

March 2023



Steel My Heart (Large)

- Extra thick protective neoprene
- Water vents
- Large over-rod flap Oversized velcro attachment

Small (up to 3.75" arbor, typically 2 to 6 weight)

Large (up to 4.5" arbor, typically 7 to 10 weight)



Brookie (Small)





# Wading Belts

Waders can be boring - but they don't have to be! Jazz up your outdoor gear with one of our wading belts and you're sure to have more fun on the water!

NEW



Rainbow Ridge\*

NEW



Enchanted Grayling



Steel My Heart



REDtro Salmon



Salty Striper

BEST  
SELLER!

Brookie



Dolly Vee

NEW



Boho Bass



Kaleido King



Unbound Brown



Mt Cutty

Quick-release buckle • Durable Polyester • Abrasion Resistant 5" adjustable length • 1.5" width





# fly fishing Tools

## FISHE® FORCEPS

Made of surgical grade steel for maximum performance and longevity. Featuring our popular patterns, these essential tools will accent your Fishe®collection!



Steel My Heart

REDtro Salmon

Unbound Brown

Rainbow Ridge

Enchanted Grayling

Salty Striper

Brookie

Boho Bass

Surgical grade steel • 5"

## FISHE® NIPPERS

Wide-bodied for comfort, and able to cut anything from 50 pound hard mono to 7x tippet with ease- these nippers are more than functional, they are FUN!



Steel My Heart

REDtro Salmon

Brookie

Rainbow Ridge

Boho Bass

Salty Striper

Unbound Brown

Enchanted Grayling

Stainless steel • Tungsten carbide cutting tip



## FISHE® POLY BOX

Designed to match your catch, this fly box keeps your flies organized and easily accessible. With its compact size and charming design, it's the must-have accessory that combines style and functionality for every angler.



Front



Brookie

Back

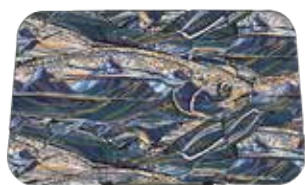


Front



Steel My Heart

Back



Rainbow Ridge



Boho Bass



REDtro Salmon



Enchanted Grayling



Salty Striper



Unbound Brown



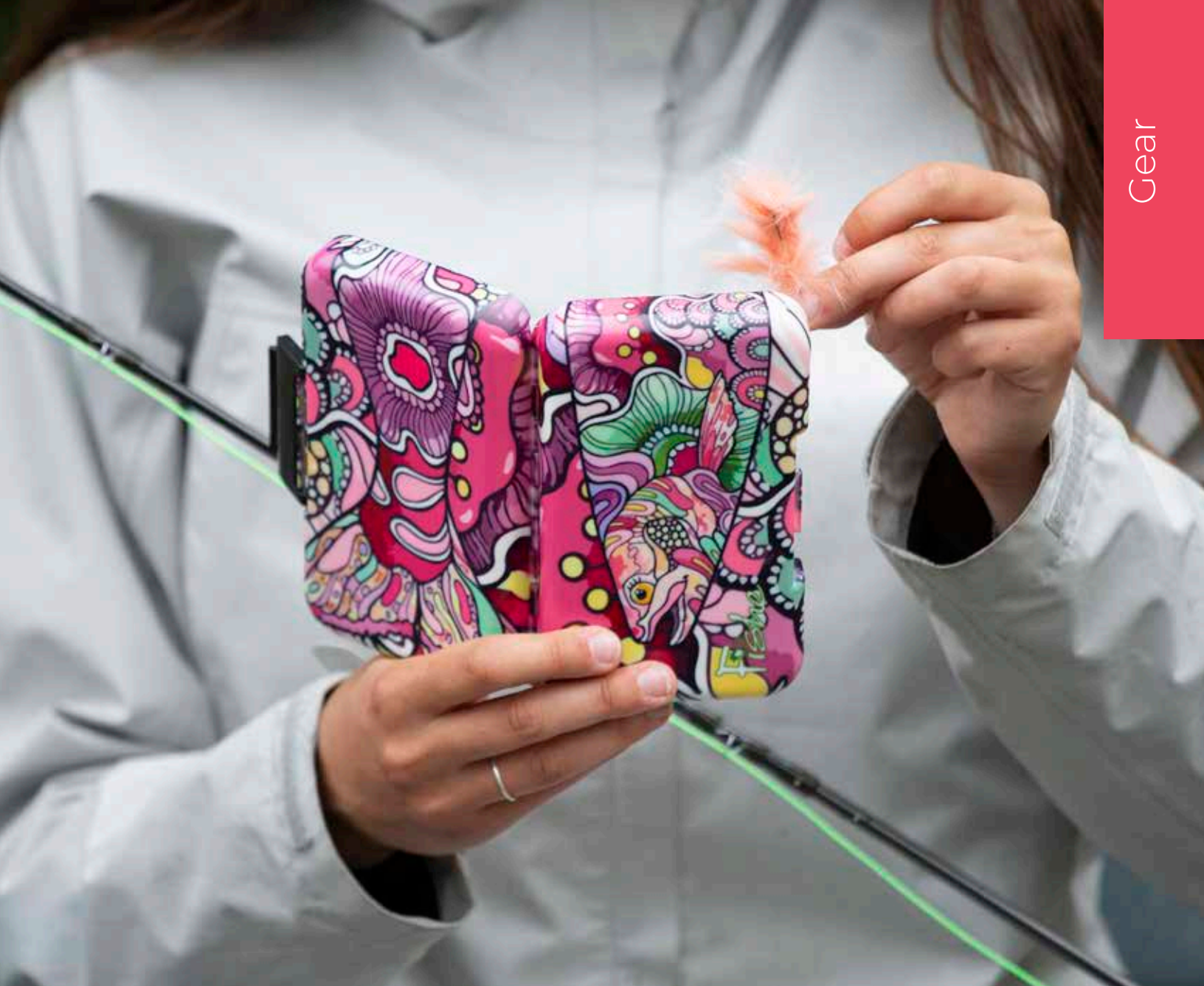
Tropical Tarpon



### Non-waterproof poly boxes:

- 5.75 L X 3.5 W X 1.5 H





# FISHE® Eyewear Care

## Fishe® Microfiber Cleaning Cloth

E-fish-iently clean dirt, oils, and fingerprints on your glasses, lens, and screens with this adorable Beauty and the Bonefish designed microfiber cloth!

- 5.75" x 6" stuffable, microfiber cloth with pouch so you can easily find it when you need it.
- High-quality 100% microfiber cloths that leave glasses spotless and scratch-free.
- Sturdy clip allow you to attach it onto camera bags, binocular harness, jackets and backpacks.
- Use with glasses, lenses, monitors, smartphones, tablets and more.















4011 Arctic Blvd, Suite C  
Anchorage, AK 99503

